

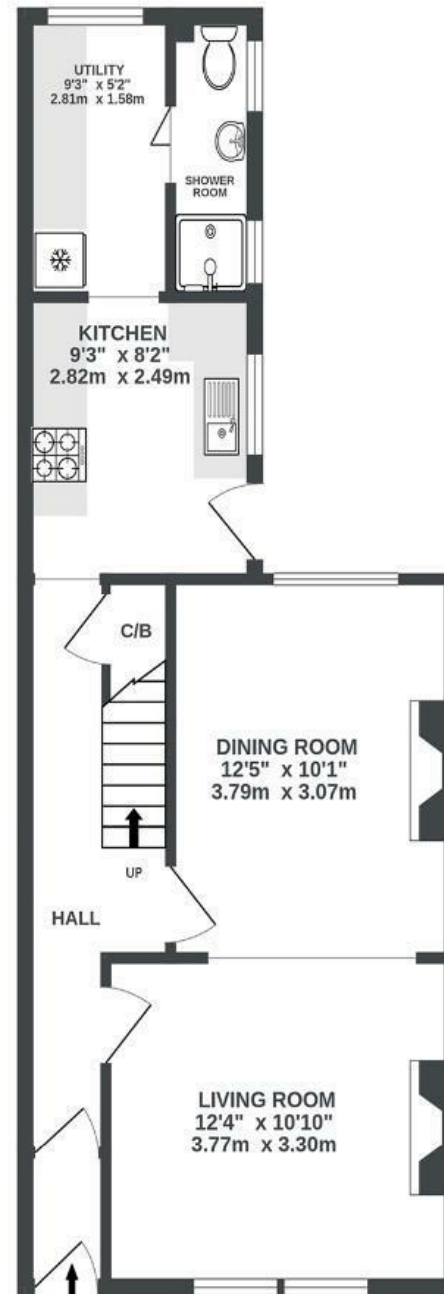
Orchard Road

ST GEORGE

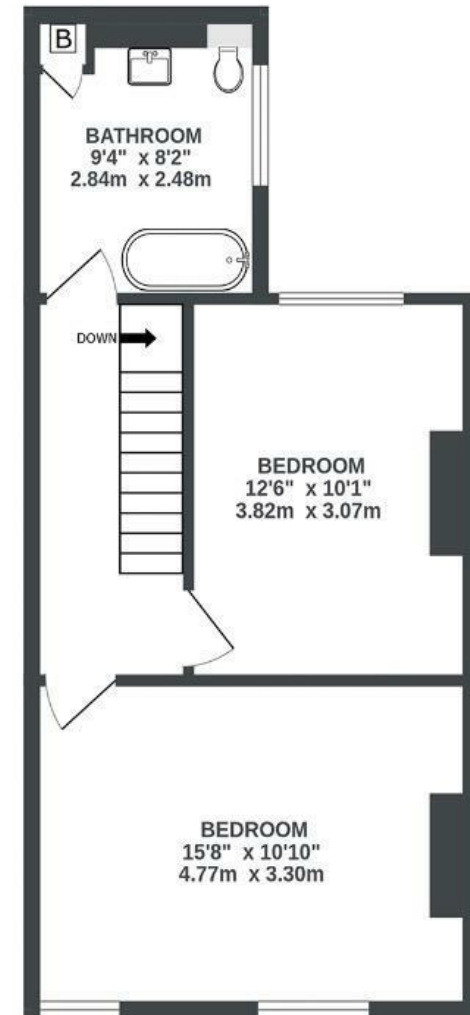
APPROXIMATE FLOOR AREA
85.7 SQM / 923 SQFT



GROUND FLOOR
494 sq.ft. (45.9 sq.m.) approx.



1ST FLOOR
429 sq.ft. (39.8 sq.m.) approx.



Illustrations are for reference purposes only, measurements are approximate, not to scale.

Boardwalk

Orchard Road

ST. GEORGE, BRISTOL

£

£375,000

zzz

2 Bedrooms

📍

BS5 7HS

🦆

2 Bathrooms

"We have loved living on Orchard Road. The street has a wonderfully friendly atmosphere and it has been great to be so close to schools, Church Road and St. George's Park. We're really going to miss the pastries from Orchard cafe!"

